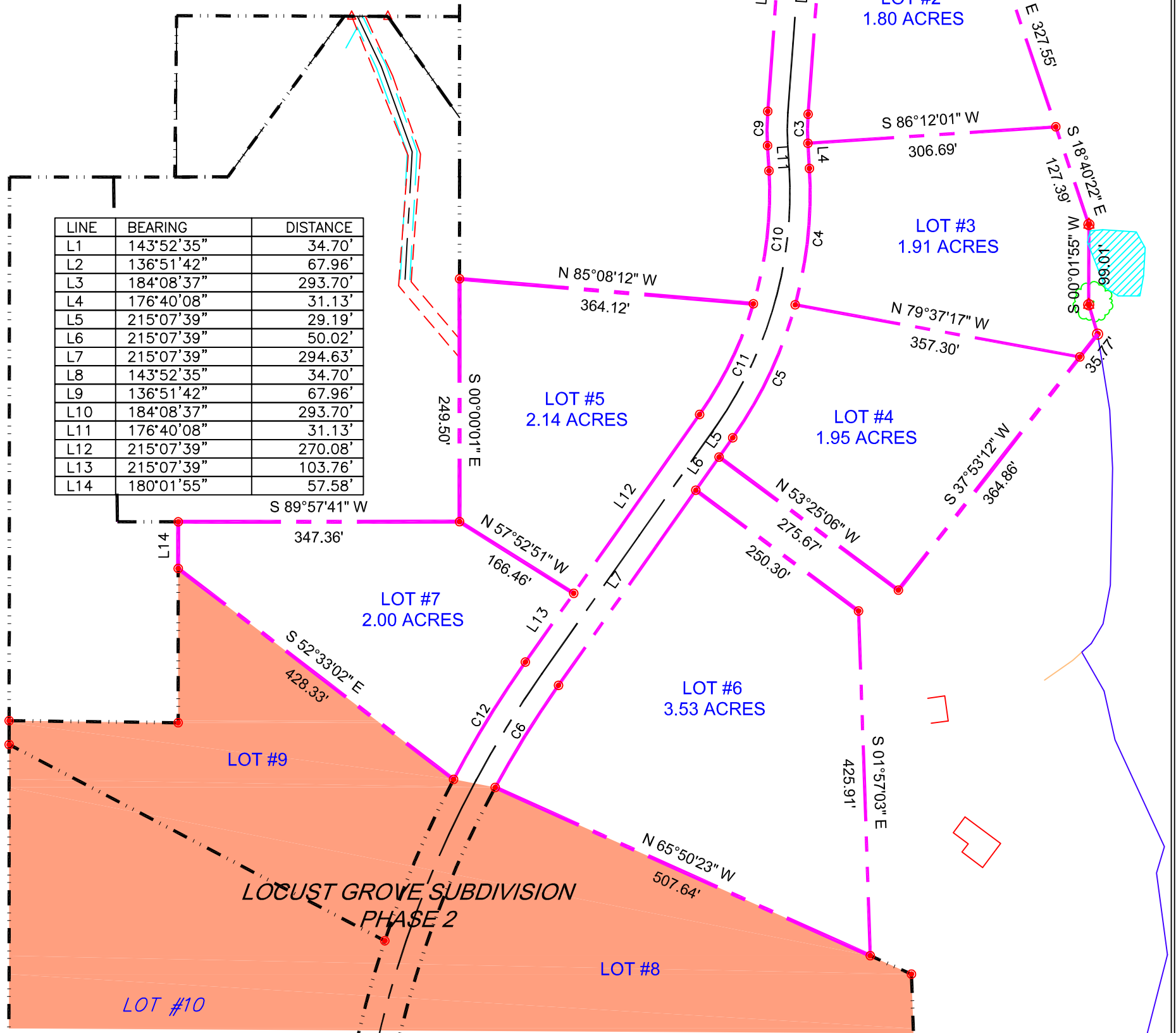


CURVE	RADIUS	ARC LENGTH	CHORD LENGTH	CHORD AZIMUTH	DELTA ANGLE
C1	475.00'	58.15'	58.12'	140°22'08"	07°00'52"
C2	275.00'	226.94'	220.55'	160°30'10"	47°16'55"
C3	275.00'	35.88'	35.85'	180°24'23"	07°28'29"
C4	525.00'	170.09'	169.34'	185°57'00"	18°33'44"
C5	525.00'	182.31'	181.40'	205°10'46"	19°53'47"
C6	1275.00'	148.43'	148.34'	31°47'33"	06°40'12"
C7	525.00'	64.27'	64.23'	140°22'08"	07°00'52"
C8	225.00'	185.68'	180.45'	160°30'10"	47°16'55"
C9	325.00'	42.40'	42.37'	180°24'23"	07°28'29"
C10	475.00'	166.26'	165.41'	186°41'47"	20°03'16"
C11	475.00'	152.58'	151.92'	205°55'32"	18°24'15"
C12	1325.00'	170.49'	170.37'	211°26'29"	07°22'21"

LINE	BEARING	DISTANCE
L1	143°52'35"	34.70'
L2	136°51'42"	67.96'
L3	184°08'37"	293.70'
L4	176°40'08"	31.13'
L5	215°07'39"	29.19'
L6	215°07'39"	50.02'
L7	215°07'39"	294.63'
L8	143°52'35"	34.70'
L9	136°51'42"	67.96'
L10	184°08'37"	293.70'
L11	176°40'08"	31.13'
L12	215°07'39"	270.08'
L13	215°07'39"	103.76'
L14	180°01'55"	57.58'



**PRELIMINARY LAYOUT
FOR PHASE 1
LOCUST GROVE SUBDIVISION**

DRAWN BY: JCP	CHECKED BY: JCP	DATE: 10-06-08
NO. DATE:	REVISIONS	BY:
DRAWING NO.:	PAGE NO.:	
7-4370	1	